

WELCOME TO EYEMED

# Vision benefits for every set of eyes

California Times

eye  
Med



# Value and wellness: It's all yours with EyeMed



## Focus on value

- Save an average of 71% off retail on eyeglasses with an eye exam<sup>1</sup>
- Choose from more than 100K network provider access points, including independent eye doctors and top optical retailers
- Get members-only offers and everyday discounts, like 40% off a complete additional pair of glasses<sup>3</sup>



## Focus on wellness

- Help spot some serious eye and health conditions sooner with a comprehensive eye exam
- Protect your eyes from digital eye strain, which is linked to blurred vision, dry eye and headaches
- Easily find an in-network eye doctor, and manage claims and benefits with online member tools

<sup>1</sup> Based on weighted average of sample transactions; EyeMed Insight network/\$10 exam co-pay/\$10 materials co-pay/\$120 frame or contact lens allowance

<sup>2</sup> EyeMed Insight network, All network data, October 2019

<sup>3</sup> At participating in-network providers

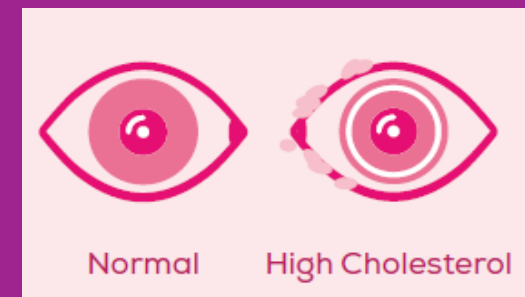
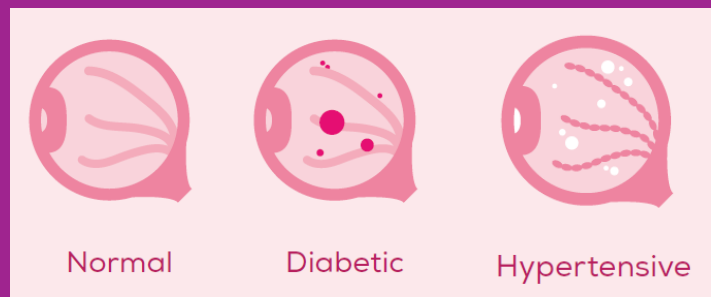
# Positive impacts start with a routine eye exam

## Vision conditions and diseases that can be spotted with an exam:

- Myopia (nearsightedness)
- Hyperopia (farsightedness)
- Presbyopia
- Astigmatism
- Glaucoma
- Cataracts
- Diabetic retinopathy
- Macular degeneration

## General health conditions that can also be detected:<sup>1</sup>

- Diabetes
- High blood pressure
- High cholesterol
- And more





# Your Vision Benefits with Eye360

In-Network Schedule	In Network	In Network with Eye360	Out of Network
<b>Exam services</b> Exam Standard Contact Lens Fit/Follow-up Premium Contact Lens Fit/Follow-up	\$10 copay Up to \$40 10% off retail price	\$0 copay at PLUS Providers Up to \$40 10% off retail price	Up to \$40 N/A N/A
<b>Frame</b>	\$0 copay; 20% off balance over \$175 allowance	\$0 copay; 20% off balance over \$225 allowance at PLUS Providers	\$45
<b>Lens- Standard Plastic</b> (single vision, bifocals, trifocals, lenticular)	\$10 copay	\$10 copay	\$40-\$80 depending on lens
<b>Standard Progressives</b>	\$10 copay	\$10 copay	Up to \$40
<b>Premium Progressives</b>	\$10 copay; 20% off retail price less \$120 allowance	\$10 copay; 20% off retail price less \$120 allowance	\$40
<b>Lens Options</b> Anti-Reflective Coating – Standard Anti-Reflective Coating – Premium Tiers UV Treatment Tint – Solid & Gradient Scratch Coating – Standard Plastic Photochromic/ Transitions Plastic Polycarbonate Other Add-Ons	\$45 20% off retail price \$15 \$15 \$15 \$15 \$75 \$40 Copay 20% off retail	\$45 20% off retail \$15 \$15 \$15 \$15 \$75 \$40 Copay 20% off retail	N/A N/A N/A N/A N/A N/A N/A N/A N/A
<b>Contact Lens</b> Disposable or Conventional  Medically Necessary	\$0 copay; \$175 allowance, plus 15% off the balance for conventional contacts  \$0 copay, paid-in full	\$0 copay; \$175 allowance, plus 15% off the balance for conventional contacts  \$0 copay, paid-in full	\$105  \$210
<b>Frequency</b>	Exam – Once every calendar year Lenses or contacts – Once every calendar year Frame – Once every calendar year		

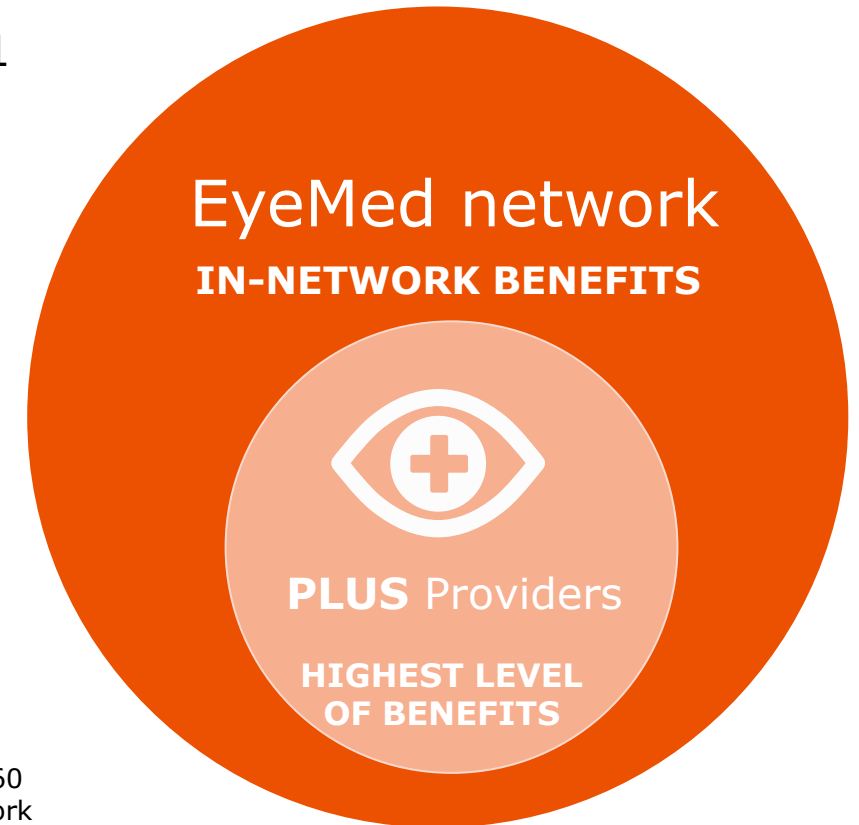
# What is Eye360?

Eye360 is a first-generation tiered benefit in the vision care industry providing enhanced benefits when members visit a PLUS Provider.<sup>1</sup>

## Enhanced benefits

---

- **\$0 copay** on eye exam
- **Up to \$50** additional frame allowance



<sup>1</sup>Enhanced insurance benefit at PLUS providers is only available in conjunction with the Eye360 benefit. EyeMed PLUS Providers are part of either the EyeMed Insight, Access or Select network listed. Eye360 and PLUS Providers are not available in all states. Can be combined with EyeMed special offers and discounts. Discount are not insurance. Fully insured plans are underwritten by: Fidelity Security Life Insurance Company®, Kansas City, MO 64111.



# A few more benefit basics

## Your frequency is based on: Calendar Year

A plan year is defined as January through December when a member has active coverage. So, if you receive an exam on March 3, 2022, you are eligible again March 3, 2023.

## Contacts are in lieu of lenses only

That means you are entitled to a full pair of glasses (frame & lenses) OR contacts and frames (you would then receive a 20% discount on your lenses).



# Find your best fit

You're on EyeMed's **Select** network,  
so you've got choices — lots of them

More than 125,000 provider access points at 27,000 locations, including:

INDEPENDENT  
PROVIDER  
NETWORK



LENSCRAFTERS'

PEARLE  
VISION

OPTICAL

Plus, your local retailers based on zip code **90245**:  
Semel Vision Care, Stein Optometric, and El Segundo EyeCare

Plus, online options:

LENSCRAFTERS'

OPTICAL

Ray-Ban

GLASSES.COM

contactsdirect

# How to find an eye doctor



Use the Provider Locator  
at [eyemed.com](https://eyemed.com)

---



Download and use the EyeMed Members App  
(available in the App Store or Google Play)

---



Check the listing of the closest  
eye doctors from your Welcome Kit (you'll  
get this after you enroll)





# Experience more with member tools

You'll receive an in-home Welcome Kit detailing your new vision benefits and the closest eye doctors. And using your benefits couldn't be easier with access to convenient digital tools.

## EyeMed Members App

- Benefits, eligibility and claims at-a-glance
- Find an eye doctor and get door-to-door directions
- Grab special offers
- Load and save prescriptions
- Set exam and contact lens reminders
- Pull up ID card and add to your wallet (for iOS only)

## Member Web

- See benefits and eligibility status\*
- View Savings Dashboard
- Estimate out-of-pocket costs before your visit to the eye doctor
- Download ID cards and EOBs
- Find an eye doctor
- Check claim status
- Get special offers



\*Due to HIPAA regulations, members will not be able to view dependents over the age of 18

# Special offers for 2023<sup>1</sup>

## Rotating offers currently include:\*

- LensCrafters®: Extra \$50 off a complete pair purchase
- Target Optical®: \$25 off everyday low prices
- Contactsdirect: Save 10%<sup>2</sup>
- Glasses.com: Get up to \$50 off any pair of designer sunglasses
- LasikPlus®: \$800 off LASIK<sup>2</sup>

\*Discounts are in-network only and are not insured benefits. May not be available on all plans. Confirm if offered by your provider. Listed offers expire 12/31/2023. See offer for exclusions.

Confidential Notice: This document contains proprietary information and is for the sole use of the intended recipient(s). Disclosure or distribution to and review or use by any unauthorized Luxottica EyeMed associate(s) and external parties is prohibited.

# Everyday discounts\*

- 40% off additional pairs of glasses
- Discounted, set pricing on hearing aids with Amplifon - up to 64% savings<sup>3</sup>
- 20% off any remaining frame balance
- 20% off noncovered items
- 15% off LASIK or 5% off promotional pricing
- Low fixed pricing for blue light-filtration lens coating
- Discounts through eyeRewards member program

1 Please see Special Offers on Member Web for details. 2 Offer can be combined with vision benefits but cannot be combined with other offers. 3 Average EyeMed member savings off manufacturer's suggested retail price as of 2021 through Amplifon Hearing. Prices differ based on hearing aid model purchased. Your actual savings may vary.



# Thanks for your time

Have a wonderful  
day

Learn more at [eyemed.com](https://eyemed.com)

The logo for eye Med, featuring the word 'eye' in a lowercase sans-serif font above the word 'Med' in a similar font, both in white on a purple square background.

eye  
Med

PPT-2009-M-656